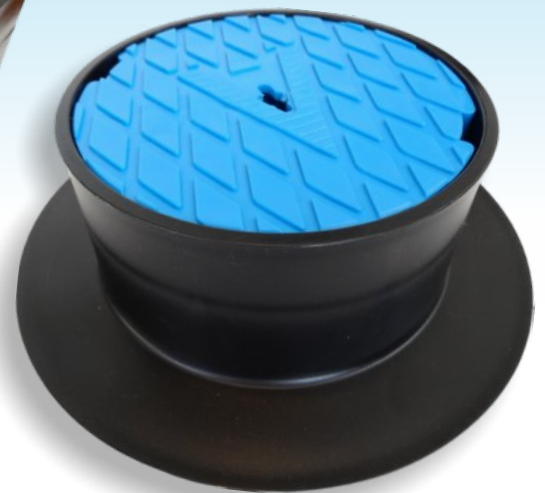


# Product Catalogue



- **Surface Boxes**
- **Bases**
- **Lids**
- **Valve Boxes**
- **Manifold Bases**



# COMPANY PROFILE

Draper Enterprises have had over 20 years of experience supplying quality surface boxes throughout New Zealand, Australia and the Pacific enabling us to develop a cost effective, lightweight and permanent range of products to fulfill the industry's requirements. We believe our product to be the most durable in the industry throughout NZ and Australia. We use virgin material which gives the advantage of strength and UV resistance over recycled materials. Draper Enterprises were the first manufacturers of surface boxes in New Zealand, and remain as the only supplier that specialises in their design and manufacture.

## FEATURES

- Draper Boxes are proudly manufactured in New Zealand from quality materials. The base and lid are made from UV resistant, high impact, high density polyethylene.
- The lid and base connected by galvanised

steel chain. Aluminium rods are placed under the lid for location purposes.

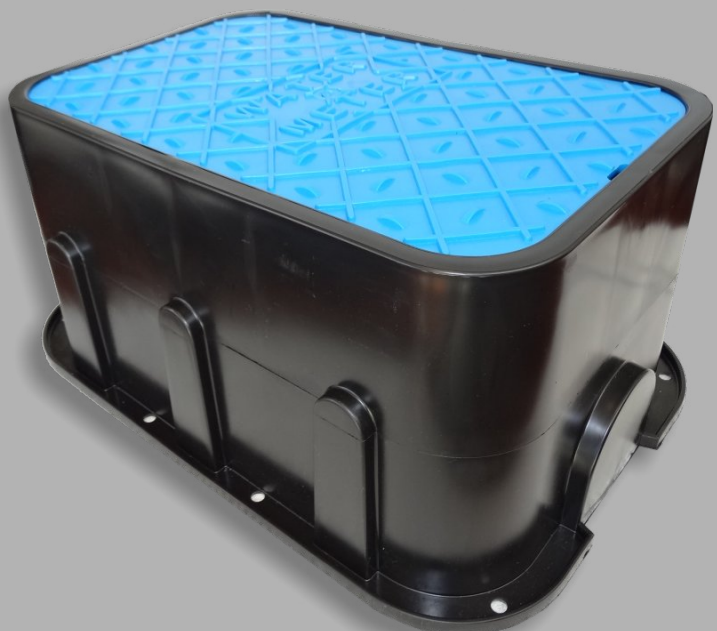
- All Draper Surface Boxes exceed the standard AS3996:2006 Class A load classification for use in pedestrian areas.
- We also supply a cast iron lid that meets Class B requirements for areas accessible to vehicles.
- Draper Surface Boxes also exceed the standard AS3661.1:1993 for slip resistance of pedestrian surfaces.
- All of our testing is conducted by Opus Laboratories, copies of any technical data required can be supplied upon request.
- We provide a variety of lid colours and markings and can provide customised logos or markings for special jobs.



Office Address:  
23A Cecil Road, Milford  
Auckland,  
New Zealand

Phone: +64 (9) 489 4419  
Facsimile: +64 (9) 489 1393

Website: [www.draperenterprises.co.nz](http://www.draperenterprises.co.nz)  
Email: [draperenterprises@xtra.co.nz](mailto:draperenterprises@xtra.co.nz)

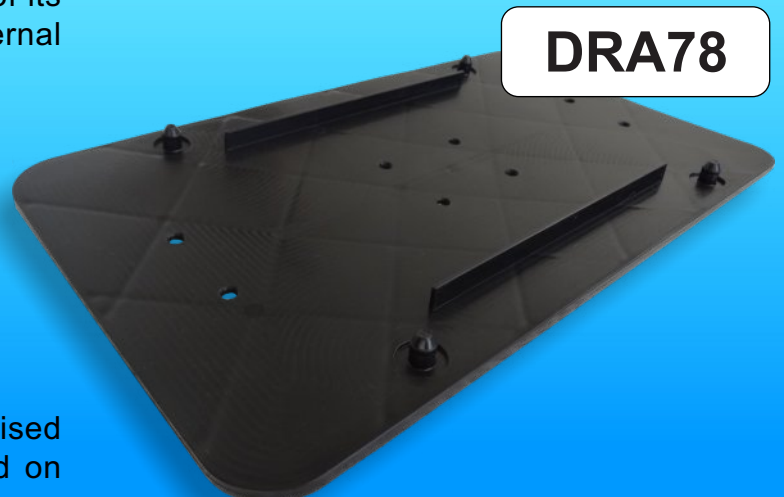


# STANDARD METER BOX



## DRA10/20 Standard Meter Box

- The new generation standard meter box has been engineered to deliver increased structural strength in both top loading and lateral loading. The new feature of the turned down top lip gives this box 10 times the lateral strength of its predecessor designed to allow greater external packing loads.
- The width and length at the base have been increased to allow for greater working room
- Suitable for use with manifold and inline water meters.
- The base and lid are connected by galvanised steel chain, and aluminium rods are placed on the underside of the lid for location purposes.





# REVERSE TAPER METER BOX



**DRA40**  
280mm Height

**DRA30**  
230mm Height

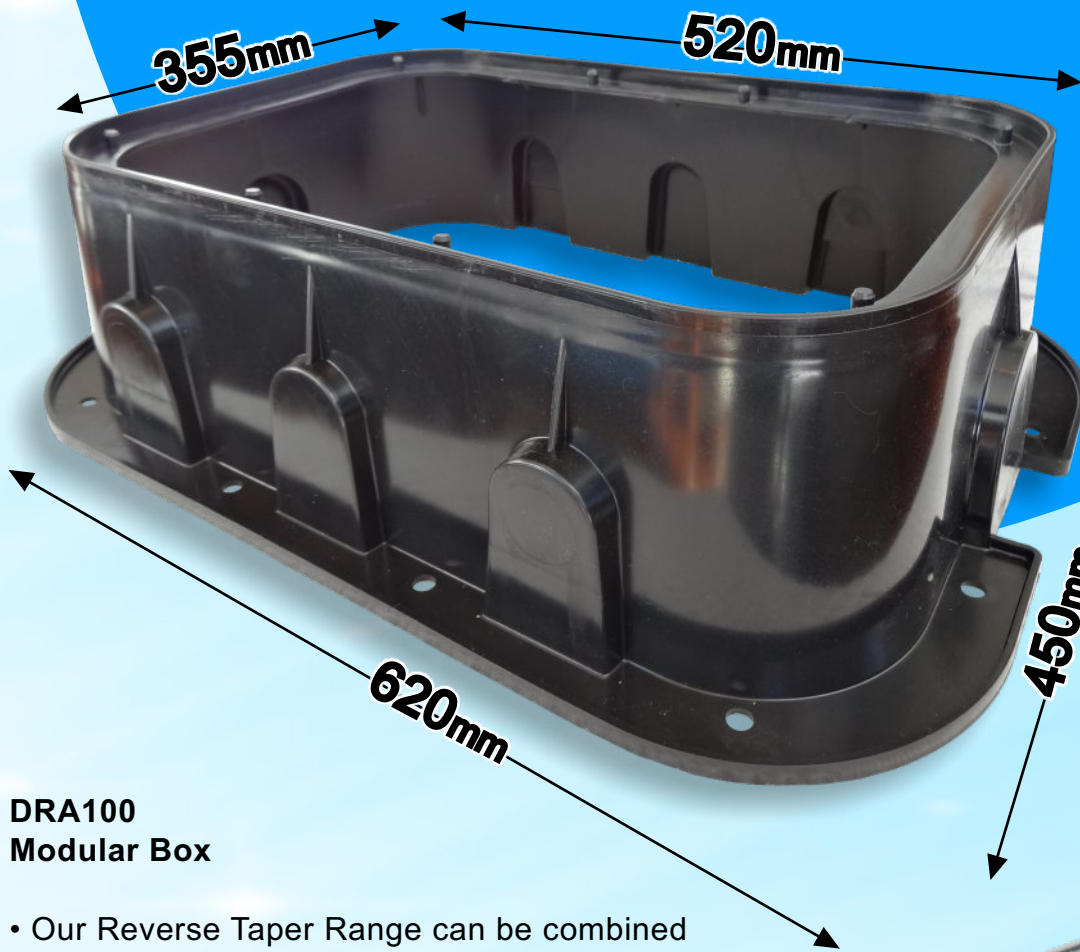
## **DRA30/40** **Reverse Taper Meter Box**

- The Reverse Taper Box provides a larger working area at the base.
- The new generation base with extra ribs and extra wall thickness makes this product now even stronger.
- Suitable for use with bulk water meters, fire hydrants, irrigation equipment and any other product requiring protection from surface traffic.
- Tapered with stacking lugs makes storage and cartage easier and cheaper
- The base and lid are connected by galvanized steel chain, and aluminium rods are placed on the underside of the lid for location purposes.

## **DRA76 Base**



# MODULAR BOX



**DRA100**

150mm Height

## DRA100 Modular Box

- Our Reverse Taper Range can be combined with an extension to make a larger 'Modular Box'
- The DRA100 extension is designed to fit the Reverse Taper series to provide extra depth or for use with multiple meters or attachments.
- We also supply 'mini' versions of the reverse taper series for use in conjunction with the modular box if required.

**DRA200**

150mm Height

**DRA300**

100mm Height



**DRA77 Base**



- Using the following models in combination with the DRA100 gives you four height options:

- Using the DRA300 = 250mm
- Using the DRA200 = 300mm
- Using the DRA30 = 380mm
- Using the DRA40 = 430mm



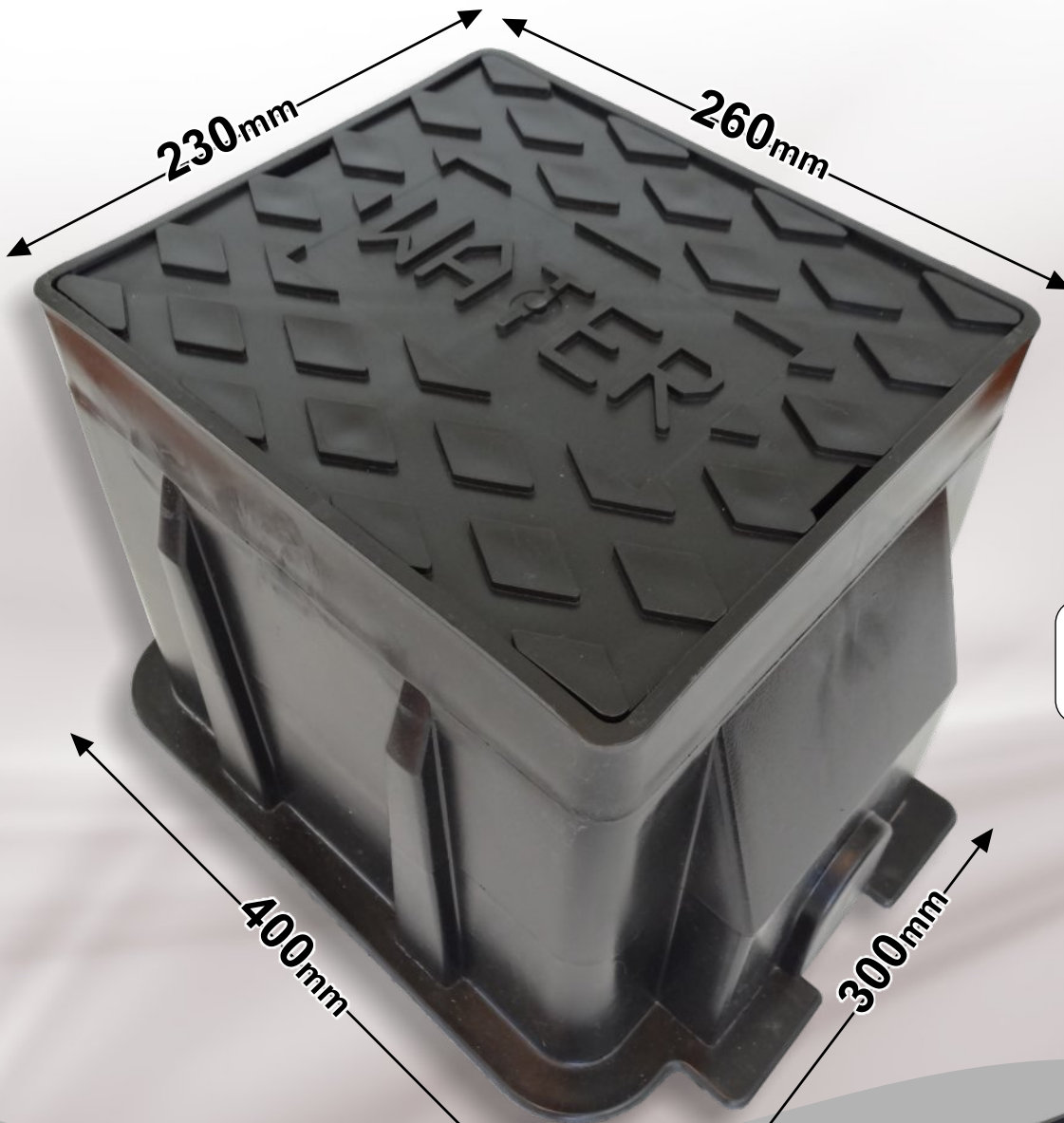
# VALVE BOX



**DRA50**  
**Valve Box**

- Suitable for sluice valves, peat valves and control valves.
- Tapered with stacking lugs makes storage and cartage easier and cheaper.
- The base and lid are connected by galvanized steel chain, and aluminium rods are placed on the underside of the lid for location purposes.

# UNIVERSAL BOX



**DRA70**  
345mm Height

**DRA60**  
260mm Height

## DRA60/70 Universal Box

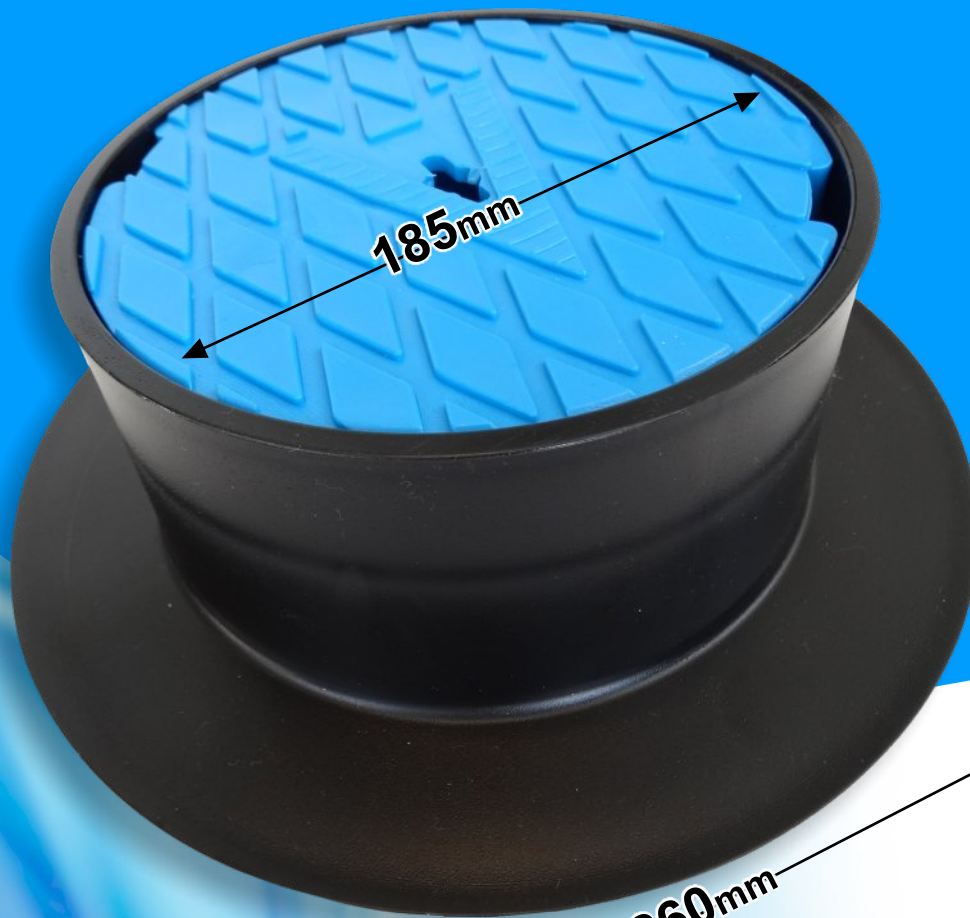
- We offer two different height options for this box making it suitable for the installation of all types of manifold meters.
- Suitable for Water Meters, Control Valves, Sluice Valves, Peat Valves, Gas, Electricity and Irrigation Equipment.
- Tapered with stacking lugs makes storage and cartage easier and cheaper.
- The base and lid are connected by galvanized steel chain, and aluminium rods are placed on the underside of the lid for location purposes.



**DRA75**

DRA 75 comes with  
DRA 400 insert included

# ROUND VALVE

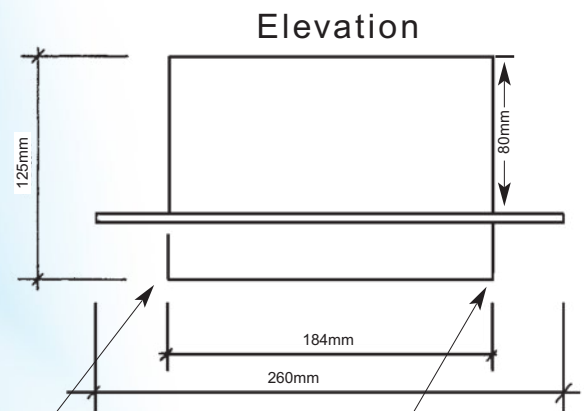


**DRA80**

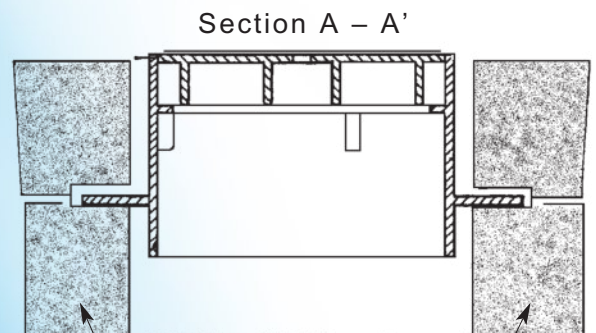
125mm Height

## **DRA80 Round Valve**

- Designed to be installed with pre-cast concrete slabs if required.
- Base diameter designed to fit over 150mm diameter and 200mm diameter R.P.V.C. pipe cut to required length
- The base and lid are connected by galvanized steel chain, and aluminium rods are placed on the underside of the lid for location purposes.



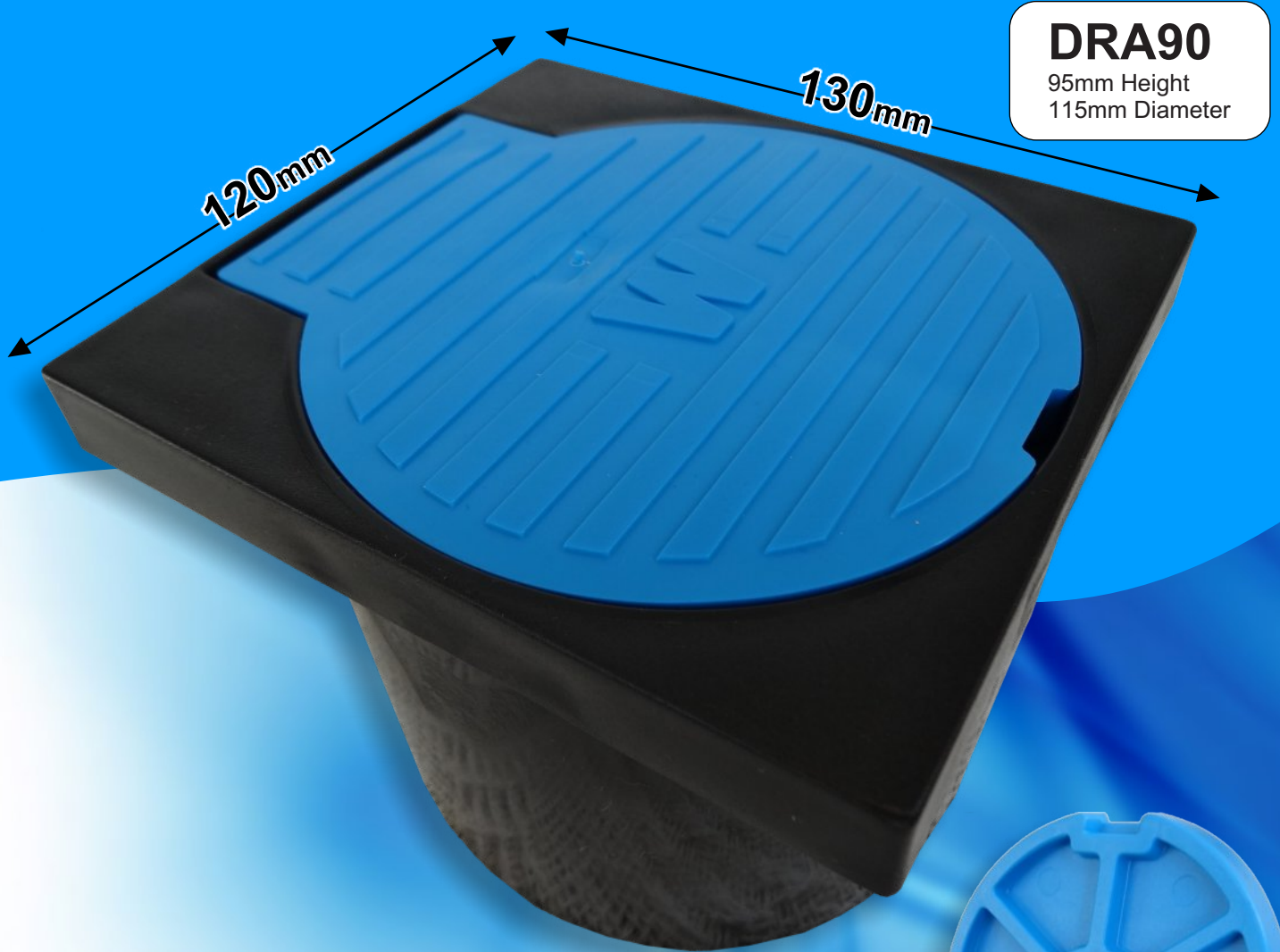
To fit over 150mm  $\varnothing$  and 200mm  $\varnothing$   
R.P.V.C. Pipe cut to length



Pre-cast concrete blocks if required



# TOBY BOX



## DRA90 Hinged Toby Box

- The lid is hinged to the body by a specially designed concealed hinge.
- Designed to fit over 100mm RPVC pipe cut to required length.



# METER BOX LIDS

All our lids come in a range of colours and lid markings.

We can also customise our lids to incorporate your company logo or customised lid marking. All our lids exceed the standard **AS3661.1:1993** for slip resistance of pedestrian surfaces. All lids (except the cast iron lid) have aluminium pins attached to the underside of the lid for location purposes.

## Round Valve

Fits box DRA80

*Available with lid marking V as shown*



## Standard

Fits boxes DRA10W, DRA20W,  
DRA10, DRA20, DRA30, DRA40,  
DRA200, DRA300

*Also available in Cast Iron*

*Available plastic lid  
markings include:*

**WATER METER, FH, LIVE CABLES, GAS, IRRIGATION BOX**

*Cast Iron lid with WATER METER marking is also available.*

*The cast iron lid is for use in areas accessible to vehicles, such as driveways.*

*When installing, the box must be fitted into concrete in order to meet  
standard AS3996:2006 class B load classification.*



## Universal

Fits boxes DRA50, DRA60, DRA70

Available lid markings include:

WATER, GAS, FH, V, SV, PV, SS, SURVEY MARK



## INSERTS

### DRA 500 Sliding Cradle

Designed to seat piping.  
The position of the cradle can be adjusted.



### DRA 400 Insert

Designed to fit any manifold.  
*Please quote which manifold  
type you are using when ordering.*

*Inserts are designed to fit with any base*





Office Address:  
23A Cecil Road, Milford  
Auckland, New Zealand

**Phone: +64 (9) 489 4419**  
Facsimile: +64 (9) 489 1393

Website: [www.draperenterprises.co.nz](http://www.draperenterprises.co.nz)  
Email: [draperenterprises@xtra.co.nz](mailto:draperenterprises@xtra.co.nz)